
GARDNER DENVER®

1st Edition
February, 2003

WELL SERVICING PUMP

MODEL

COMPACT

PARTS LIST

Gardner

Denver

COMPACT WELL SERVICING PUMP

MAINTAIN PUMP RELIABILITY AND PERFORMANCE WITH GENUINE GARDNER DENVER PARTS AND SUPPORT SERVICES

Gardner Denver® genuine pump parts are manufactured to design tolerances and are developed for optimum dependability. Design and material innovations are the result of years of experience with hundreds of different pump applications. Reliability in materials and quality assurance is incorporated in our genuine replacement parts.

Your authorized Gardner Denver Sales Office offers all the backup you'll need. The Fort Worth Manufacturing Facility maintains a large inventory of genuine parts.

Gardner Denver supports your needs with these services:

1. Trained parts specialists to assist you in selecting the correct replacement parts.
2. Repair and maintenance kits designed with the necessary parts to simplify servicing your pump.

Authorized service technicians are factory trained and skilled in pump maintenance and repair. They are ready to respond and assist you by providing fast, expert maintenance and repair services.

For the location of your local authorized Gardner Denver distributor, refer to the yellow pages of your phone directory or contact:

Factory (Tulsa):

Gardner Denver Well Servicing Pumps
4747 South 83rd East Avenue
Tulsa, Oklahoma 74145

Phone: (918) 664-1151
(800) 738-8099

Fax: (918) 664-6225

Factory (Ft. Worth):

Geoquip
7533 Kathy Lane
Ft. Worth, Texas 76126

Phone: (817) 249-6400
(800) 824-0271

Fax: (817) 249-6401

INSTRUCTIONS FOR ORDERING REPAIR PARTS

When ordering parts, specify Pump MODEL and SERIAL NUMBER (see nameplate on unit). The Serial Number is also stamped on top of the cylinder end of the frame (cradle area).

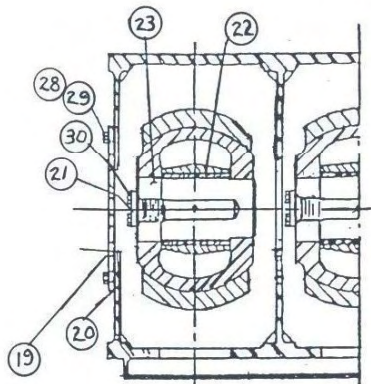
All orders for Parts should be placed with the Tulsa or Ft. Worth facility.

Where NOT specified, quantity of parts required per pump or unit is one (1); where more than one is required per unit, quantity is indicated in parenthesis. **SPECIFY EXACTLY THE NUMBER OF PARTS REQUIRED.**

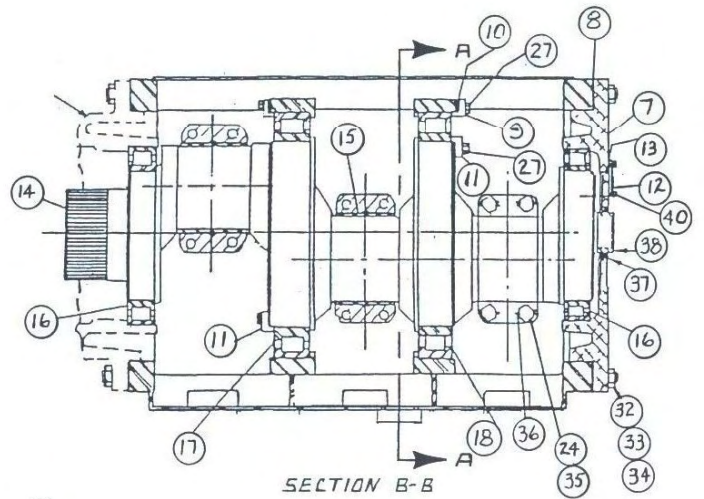
TABLE OF CONTENTS

Maintain Pump Reliability and Performance with Genuine Gardner Denver Parts and Support Services.....	i
Instructions For Ordering Repair Parts.....	i
Power End Assembly and Lube Assembly.....	
Gear Reducer Assembly and Lube Assembly	
Fluid End Assembly, 3".....	
Fluid End Assembly, 3-1/2", 4", & 4-1/2".....	
Stuffing Box and Packing Kit, 3".....	
Stuffing Box and Packing Kit, 3-1/2".....	
Stuffing Box and Packing Kit, 4".....	
Stuffing Box and Packing Kit, 4-1/2".....	
Special Tools.....	

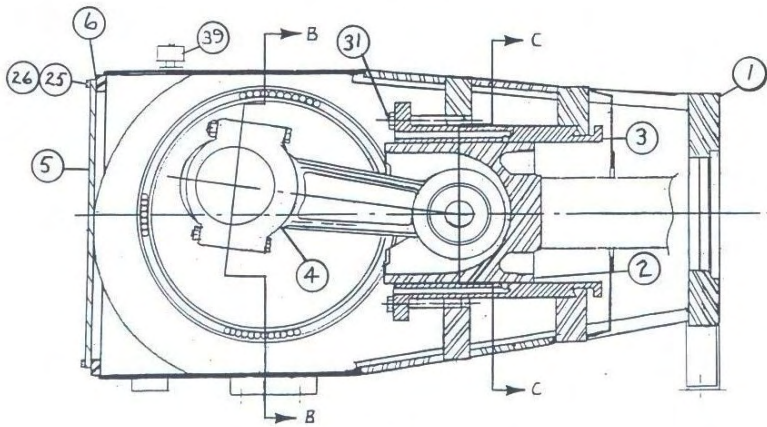
POWER END ASSEMBLY



HALF SECTION C-C



SECTION B-B

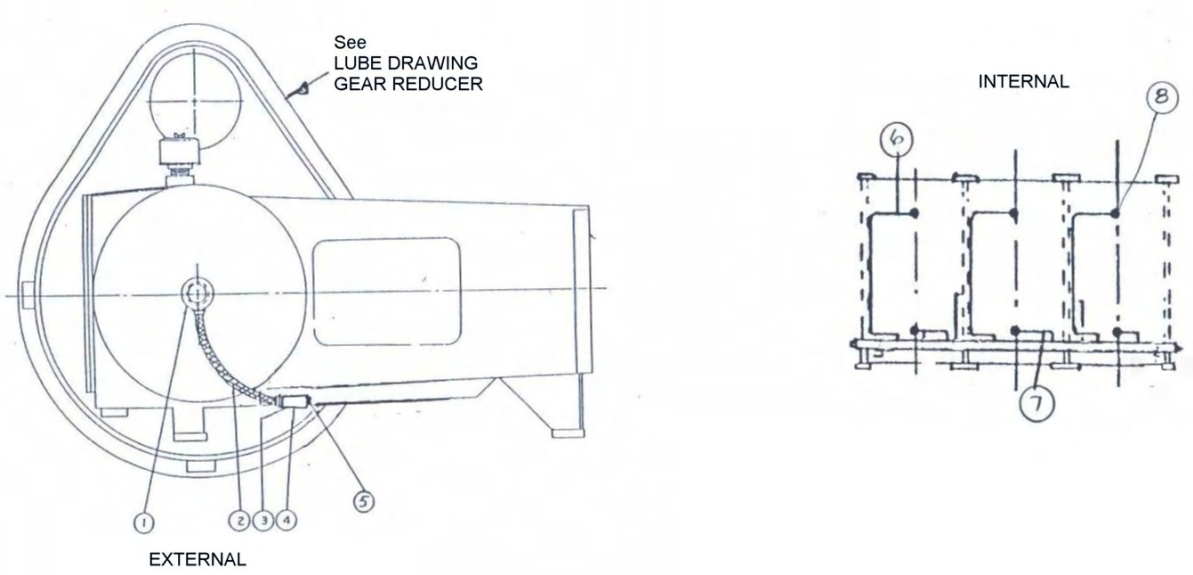


SECTION A-A

POWER END, COMPACT

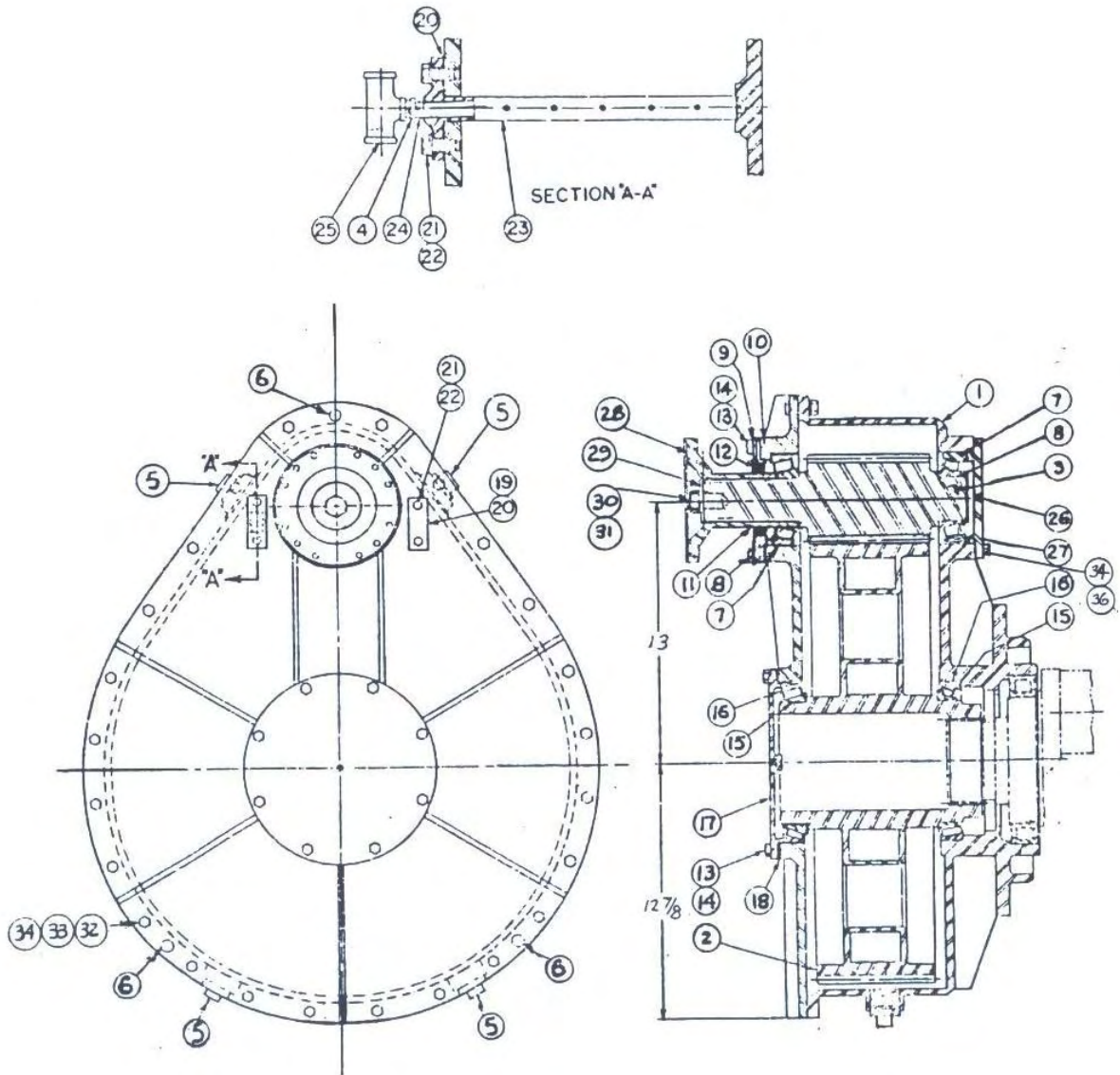
Ref. No.	Name of Part	Qty.	Part No.
1	FRAME, COMPACT	1	102426
2	CROSSHEAD	3	102408
3	CROSSHEAD GUIDE.....	6	102409
4	CONNECTING ROD (Make from 102518 Casting).....	3	102422
5	REAR COVER	3	102427
6	REAR COVER GASKET	1	102428
7	MAIN BEARING HOUSING.....	1	120170W
8	GASKET, MAIN BEARING HOUSING	2	100092
9	BEARING RETAINER OUT RACE.....	6	102440
10	SHIM SET, RR 500, MAIN BEARING	1	100084
11	BEARING RETAINER INNER RACE	6	100083
12	TACK COVER, C500, COMPACT.....	1	100093
13	TACK COVER GASKET, C500 P.E.	1	100101
14	CRANKSHAFT, C500 P.E.....	1	120153W
15	CONNECTING ROD BEARING (List Price \$184.72/BJ Price: \$163.00).....	3	100108
16	OUTSIDE MAIN BEARING.....	2	100109
17	INSIDE MAIN BEARING FIXED.....	1	100110
18	INSIDE MAIN BEARING – FLOAT	1	100111
19	SIDE COVER, C500 POWER END (1201)	2	101865
20	SIDE COVER GASKET (See 120173W).....	2	100091
21	CROSSHEAD PIN RETAINING PLATE.....	3	102479
22	BEARING CROSSHEAD PIN.....	3	100089
23	WRIST PIN, H600 COMPACT (Also fits C500).....	3	120218-1W
24	CONNECTING ROD BOLTS (Parent # of Tabulated Details).....	3	10012
25	CAPSCREW 3/8" – 16 x 1" GR. 5, HEX HEAD (454VP003- 006) List Price: \$.90).....	26	103258
26	FLATWASHER: 3/8"	38	103404
27	CAPSCREW 3/8 – 16 x 3/4 GR. 5, HEX HEAD (454VP003- 006) (List Price: \$.90).....	38	103259
28	CAPSCREW – 3/8 – 16 x 3/4 GR. 5.....	0	103259*
29	FLATWASHER: 3/8"	0	103404*
30	CAPSCREW: 1/2 - 13 x 1-1/4 GR. 5 (List Price \$.90)	6	103282
31	CAPSCREW: 5/8 – 11 x 4 GR. 8.....	12	103271
32	STUD: 7/8 – 9 x 3 GR. B7 (List Price \$1.80).....	16	103325
33	HEX NUT: 7/8 – 9 (List Price \$.90).....	16	103345
34	FLATWASHER: 7/8 – 2 SAE (List Price \$1.20)	16	103405
35	HEX NUT: 5/8 – 11 SLOTTED (List Price \$.90)	12	103347
36	COTTER PIN: 1/8" x 1-1/4"	12	103410
37	SEAL, 2.5 x 3.250 x .375	1	117314W
38	SPACER	1	120849W
39	BREATHER	1	100066
40	CAPSCREW – 3/8 – 16 x 3/4 GR. 5.....	0	103259**
41	NAMEPLATE	0	100214
42	LUBE DRAWING, C500 P.E.....	0	102393
43	TACK DRIVE – OPTIONAL	0	100100
44	OUTLINE DRAWING.....	0	102580

POWER END LUBRICATION



Ref. No.	Name of Part	Qty.	Part No.
1	ROTO SEAL	1	100064
2	HOSE ASSEMBLY	1	100063
3	1/2 FPT TEE	1	103380
4	1/2 MPT x 2 NIPPLE.....	1	103375
5	1/2 MPT PLUG.....	1	103365
6	HOSE ASSEMBLY, 25-1/2".....	3	100580
7	HOSE ASSEMBLY, 9-1/2".....	3	100581
8	FITTING, 1/4 MPT x 90° TUBE	12	103418

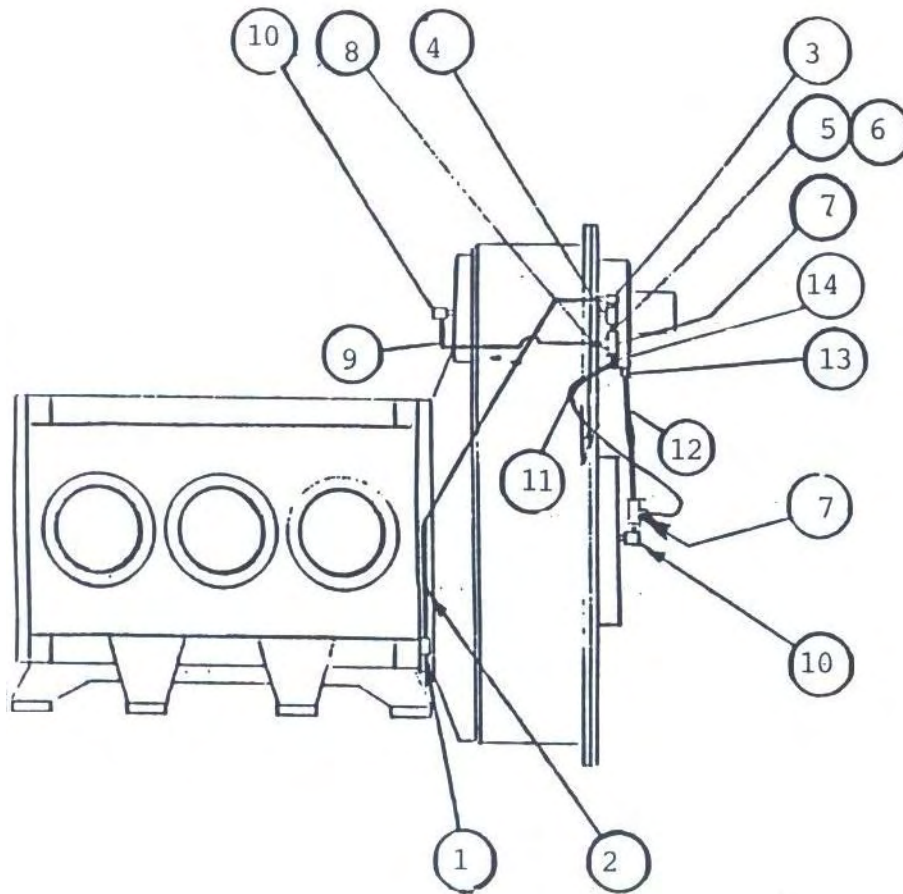
GEAR REDUCER



GEAR REDUCER

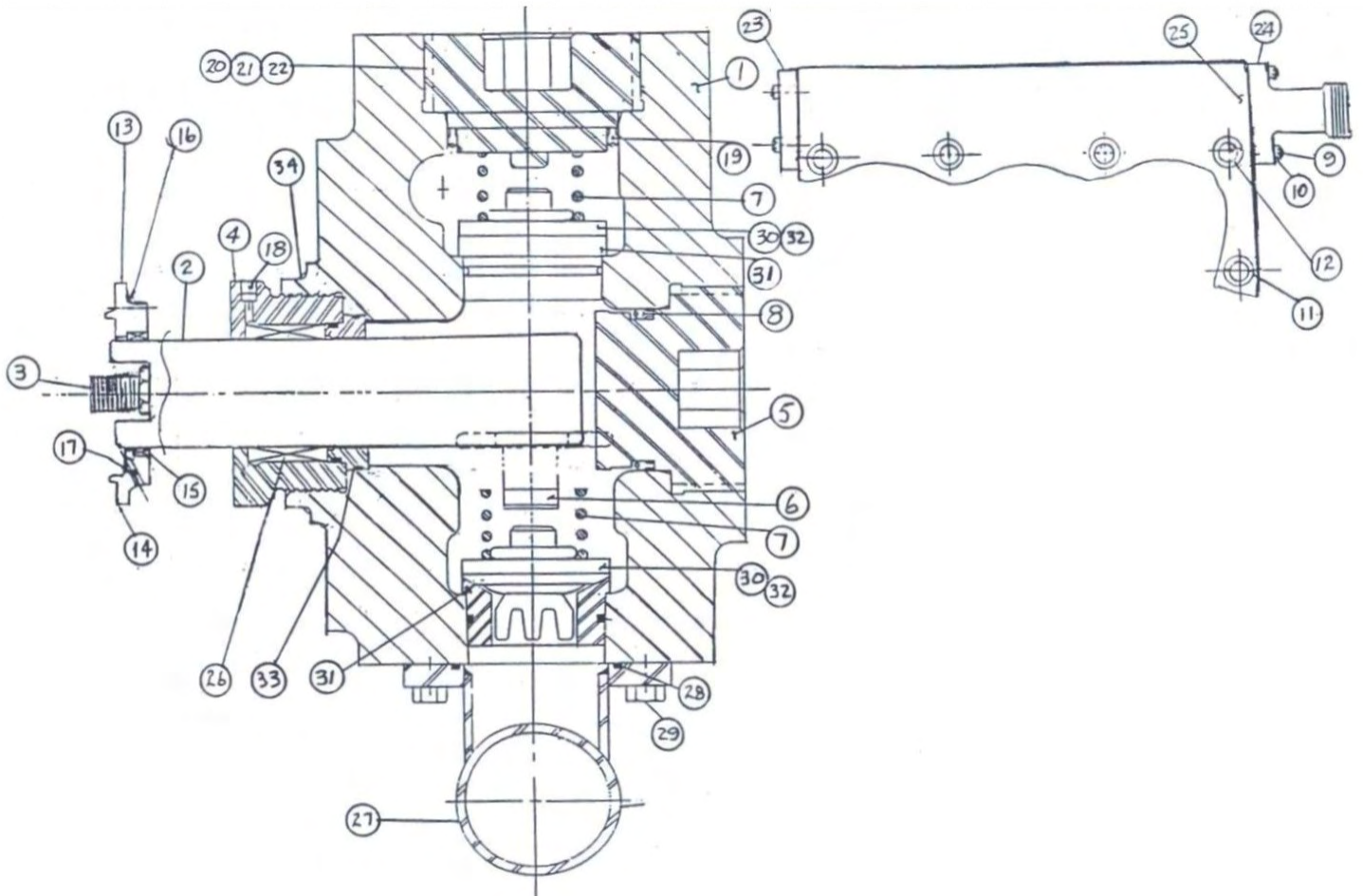
Ref. No.	Name of Part	Qty.	Part No.
1	GEAR CASE	1	102423
2	GEAR	1	102421
3	PINION SHAFT	1	102420
4	PIPE HEX BUSHING, 1/4" x 1/8 STEEL	1	
5	PIPE PLUG, 3" NPT1/2 NPT	6	103368
6	DOWELS, 3/4 x 1" L.	3	
7	BEARING CUP.	2	100165
8	BEARING CONE	2	100166
9	PINION BEARING RETAINER	1	100121
10	SHIM SET	1	100123
11	SPACER	1	100117
12	OILSEAL	1	100169
13	BOLT, HEX HD. 1/2 UNC x 1-1/2 LONG	16	
14	LOCKWASHER, 1/2" MEDIUM	23	
15	BEARING CONE	2	100168
16	BEARING CUP	2	100167
17	BEARING COVER	1	100118
18	SHIM SET (Ref. Only, See item 10)	0	100123
19	COVER, OIL LUBE HOLE	1	100120
20	GASKET, OIL LUBE HOLE	2	100122
21	BOLT, HEX HD. 3/8 UNC x 7/8" LARGE	4	
22	LOCKWASHER, 3/8" MEDIUM	4	
23	SPRAY PIPE	1	100119
24	PIPE, CLOSE NIPPLE, 1/8" NPT	1	
25	PIPE, REDUECING TEE, 1/2 x 1/2 x 1/4	1	
26	PIPE PLUG, 1/8" NPT	1	
27	CAP	1	100126
28	COMPANION FLANGE, SPICER 6-1/2 – 1 – 741	1	100776
29	RETAINER WASHER	1	100124
30	BOLT, HEX HED. 1 – 12 NF x 1-1/2" LARGE	1	
31	LOCKWASHER, 1"	1	
32	CAPSCREW, 1/2 x 1-3/4 LARGE HEX HEAD	19	
33	NUT, 1/2" HEX HD.	24	
34	LOCKWASHER, 1/2"	20	
"A" 35	LUBE DRAWING REFERENCE		
26	CAPSCREW 1/2 x 1-1/4 LARGE HEX HEAD	8	

LUBRICATION ASSEMBLY



Ref. No.	Name of Part	Qty.	Part No.
1	FITTING, 1025-8-8S (1/2" x 90 ELL).....	1	104135
2	HOSE, 246C8-JS8-JS8 (Cut to Fit).....	1	
3	FITTING, 1012-8-8S (1-2" Straight).....	1	104136
4	PIPE TEE, 1-2 x 1-2 x 1-4".....	1	103377
5	BUSHING, PIPE – 1-2 x 1-4".....	1	103388
6	FITTING, 1012-4-4S STRAIGHT.....	1	104256
7	SWIVEL NUT TEE, 66602-04-04-04 (Tube).....	2	103450
8	ELBOW, 90° SWIVEL (6602-04-04-FG (Tube).....	1	103599
9	HOSE, 246W-JS4-JS4 31-1/4" (Hose-29").....	1	104134
10	ELBOW 90° 1025-2-4S (Tubing).....	2	103419
11	HOSE, 246C4-JS4-JS4 10-1/4" (Hose-7-3/4).....	1	104133
12	HOSE, 246C4-JS4-JS4 6-7/16" (4-3/16").....	1	104132
13	FITTING, 1012-2-4S (Straight Tubing).....	1	103421
14	PLUG, #2 – 1/8" PIPE.....	1	103370

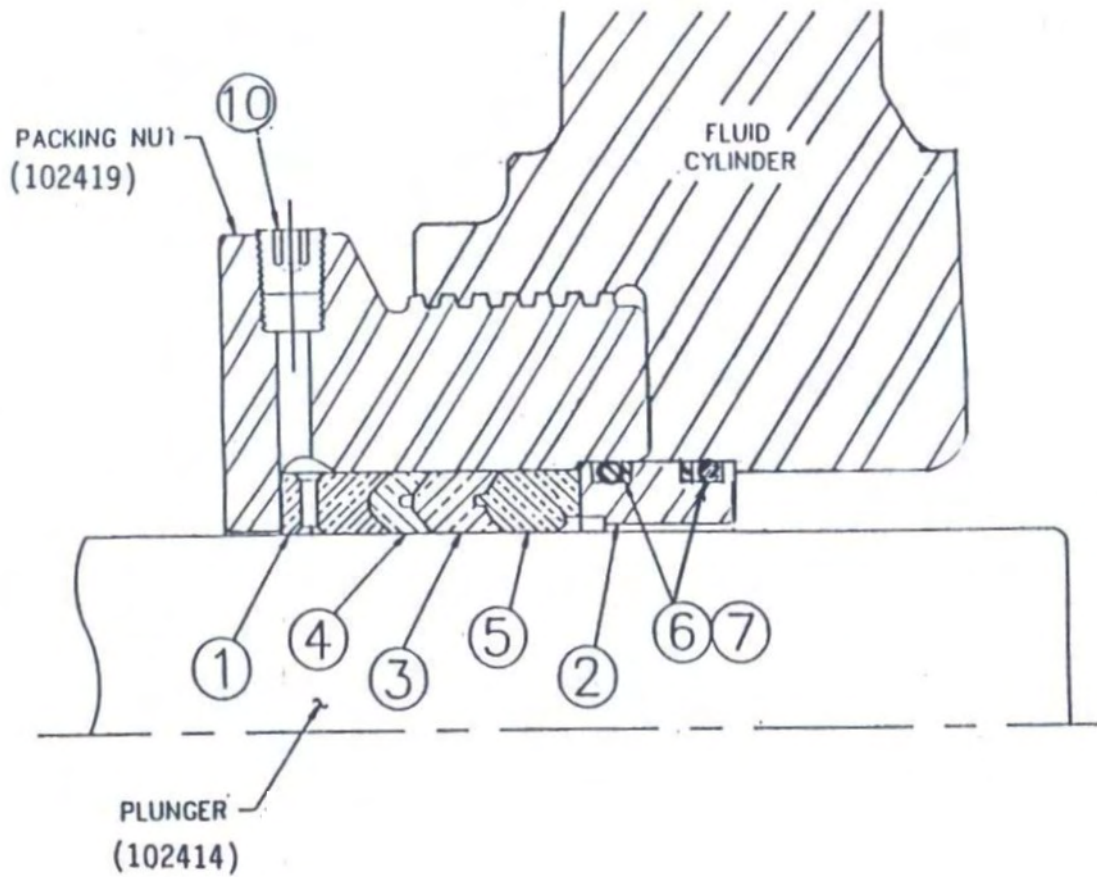
FLUID CYLINDER ASSEMBLY – 3" COMPACT



COMPACT FLUID END – 3”

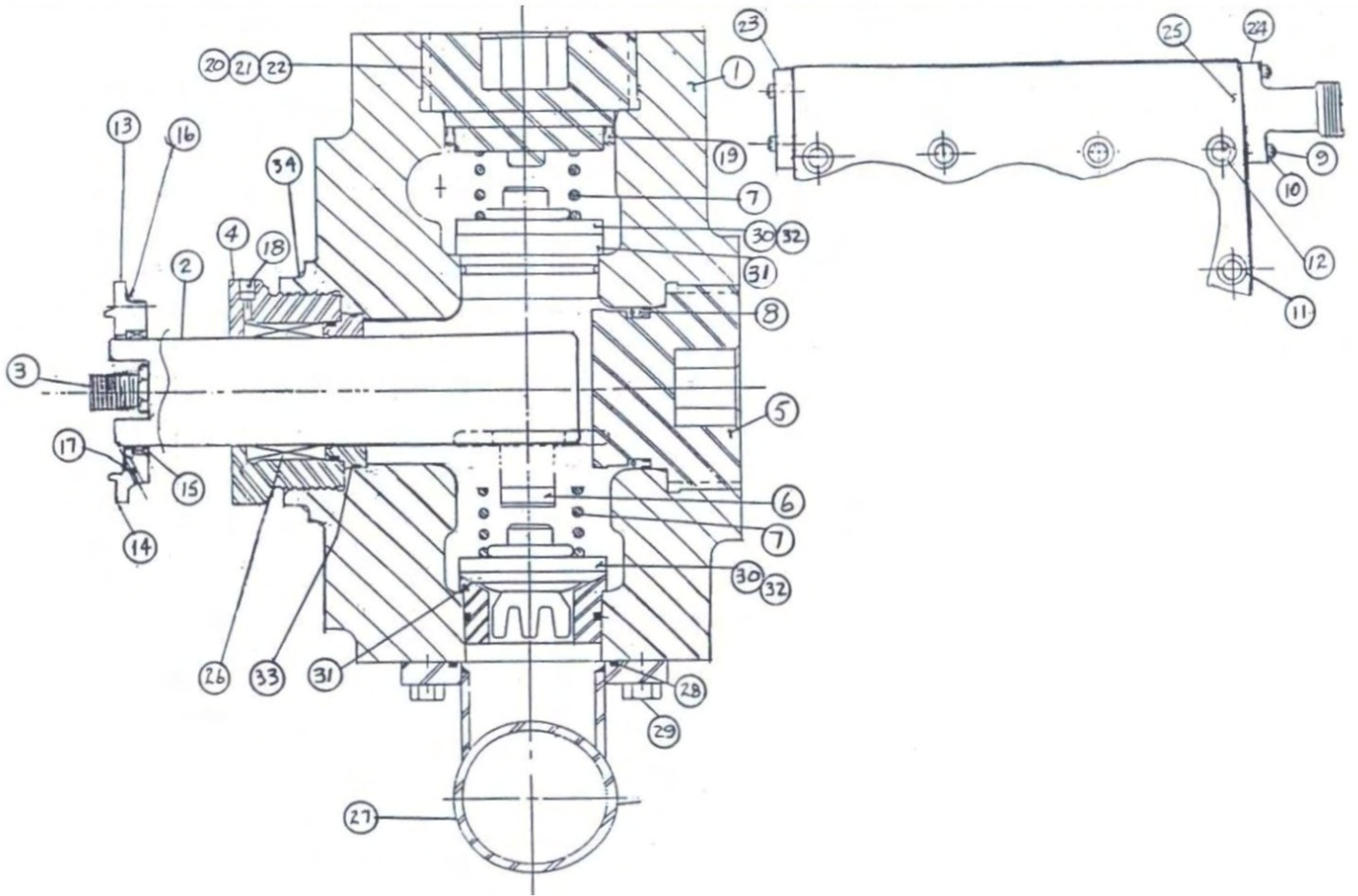
Ref. No.	Name of Part	Qty.	Part No.
1	FLUID CYLINDER 3”	1	103369
2	PLUNGER.....	3	102414
3	PLUNGER STUD.....	3	100113
4	PACKING NUT	3	102419
5	SUCTION COVER.....	3	103681
6	VALVE STOP, SUCTION	3	103682
7	VALVE SPRING.....	6	100198
8	SUCTION COVER SEAL.....	3	103683
9	1” – 8NC x 3-1/2 STUD.....	8	103334
10	1” – 8NC HH NUT.....	8	103255
11	1” – 12NC TPFs x 11” SCREW (500 Ft. Lbs)	4	102498
12	1-3/8 – 12NC TPFs x 10-1/2 (1300 Ft. Lbs).....	4	102499
13	DIAPHRAGM PLATE.....	3	102407
14	DIAPHRAGM GASKET.....	3	102500
15	DIAPHRAGM OIL SEAL 3 x 3-1/2.....	6	101674
16	DIAPHRAGM SCREW 3/8 x 16 x 5/8 HHCS.....	12	103259
17	SET SCREW 5/16 – 18NC	6	103431
18	PLUG, PIPE 1-1/4 NPT (Ref.)	0	103364
19	DISCHARGE COVER SEAL	3	102466
20	DISCHARGE COVER.....	2	102400
21	GAGE CONNECTION & DISCHARGE COVER	1	102467
22	RETAINER NUT, GAGE CONNECTION.....	1	102468
23	BLANK DISCHARGE FLANGE	1	100180
24	DISCHARGE FLANGE, 2” – 1502.....	1	100182
25	SEAL, DISCHARGE FLANGE	2	100204
26	PACKING ASSEMBLY	3	103684
27	SUCTION MANIFOLD, 4” VICTAULIC	1	100175
28	O-RING, SUCTION MANIFOLD	3	100203
29	CAP SCREWS, 3/4 - 10 x 2 B7	12	103296
30	VALVE COMPLETE.....	6	117331W
31	SEAT.....	6	101376
32	INSERT VALVE	0	
33	ADAPTOR – STUFFING BOX.....	3	103685
34	ADAPTOR – FLUID END	3	102443
REFERENCE:			
	VALVE COVER TOOL.....	1	100160
	PACKING NUT TOOL.....	1	102485
	PLUNGER TOOL.....	1	102483
OPTIONAL EQUIPMENT			
	DISCHARGE FLANGE, 602-1002.....	0	101386
27	SUCTION MANIFOLD, 4” VICTAULIC WITH LIFTERS.....	1	PP1004700
	CYLINDER DRAIN.....	0	210AD01

PACKING ASSEMBLY – 3” COMPACT



Ref. No.	Name of Part	Qty.	Part No.
1	LANTERN RING/FEM ADAPTOR.....	1	102464
2	SEAL RING.....	1	103685
3	PRESSURE RING (STANDARD).....	1	100331
4	PRESSURE RING (SHORT).....	1	102465
5	HEADER RING.....	1	100332
6	O-RING.....	2	102451
7	BACK-UP.....	2	102452

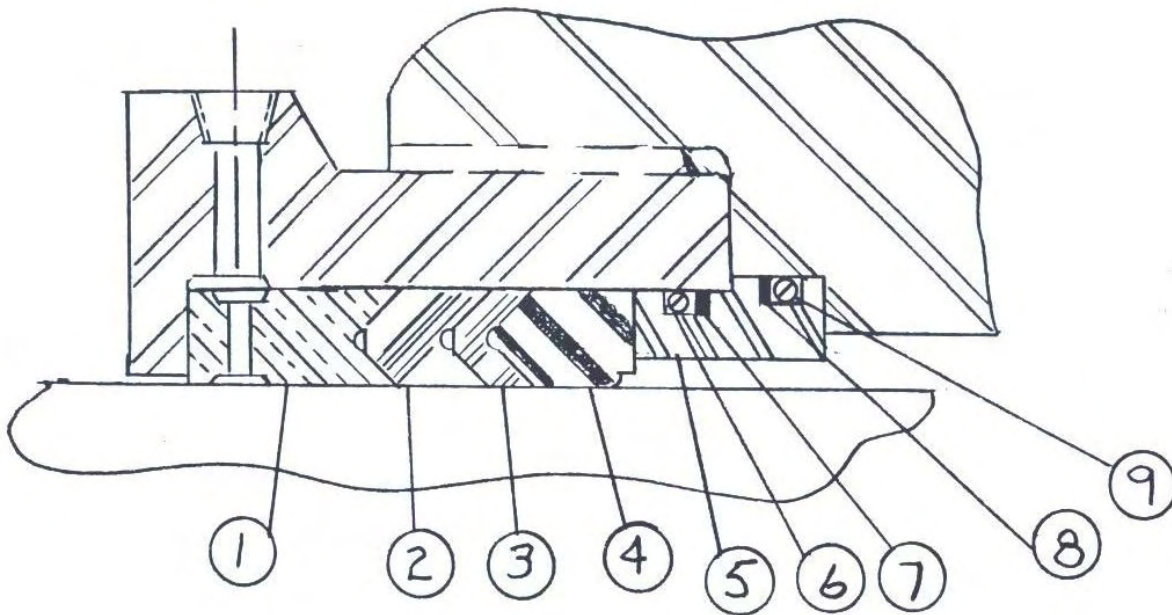
FLUID END ASSEMBLY – 3-1/2"



FLUID CYLINDER ASSEMBLY – 3-1/2” COMPACT

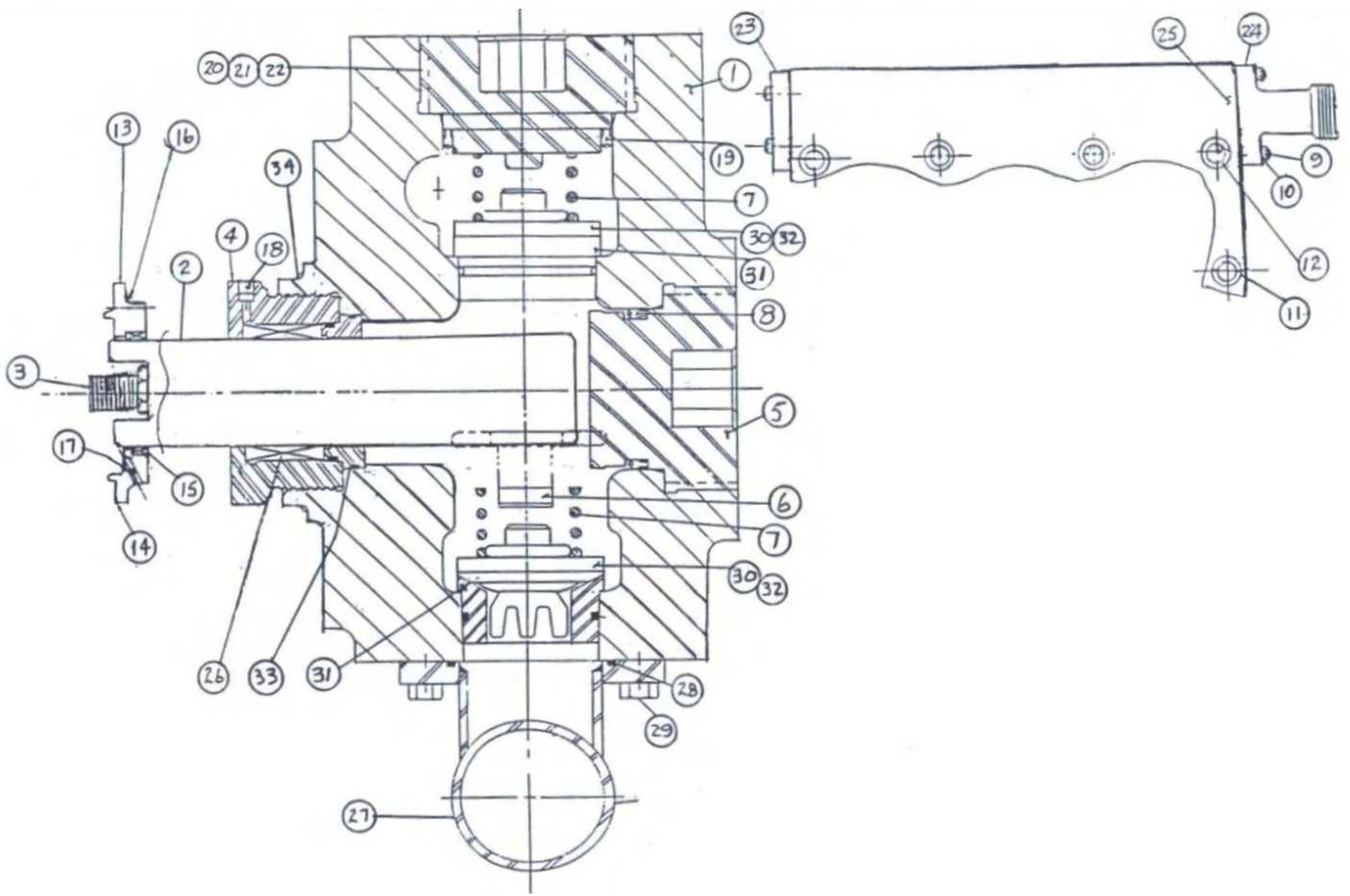
Ref. No.	Name of Part	Qty.	Part No.
1	FLUID CYLINDER 3-1/2” – 4-1/2”	1	102441
2	PLUNGER 3-1/2”	3	104134
3	PLUNGER STUD	3	100113
4	PACKING NUT 3-1/2”	3	102418
5	SUCTION COVER	3	102401
6	VALVE STOP, SUCTION	3	100176
7	VALVE SPRING.....	6	100198
8	SUCTION COVER SEAL.....	3	100197
9	1” – 8NC x 3-1/2 STUD.....	8	103334
10	1” – 8NC HH NUT	8	103255
11	1” – 12NC TPFS x 11” SCREW (500 Ft. Lbs)	4	102498
12	1-3/8 – 12NC TPFS x 10-1/2 (1300 Ft. Lbs).....	4	102499
13	DIAPHRAGM PLATE.....	3	102406
14	DIAPHRAGM GASKET.....	3	102500
15	DIAPHRAGM OIL SEAL 3-1/2 x 4-1/2.....	6	102503
16	DIAPHRAGM SCREW 3/8 x 16 x 5/8 HHCS.....	12	103259
17	SET SCREW 5/16 – 18NC	6	103431
18	PLUG, PIPE 1/4 NPT (Ref.).....	0	103364
19	DISCHARGE COVER SEAL	3	102466
20	DISCHARGE COVER.....	2	102400
21	GAGE CONNECTION & DISCHARGE COVER	1	102467
22	RETAINER NUT, GAGE CONNECTION.....	1	102468
23	BLANK DISCHARGE FLANGE	1	100180
24	DISCHARGE FLANGE, 2” – 1502.....	1	100182
25	SEAL, DISCHARGE FLANGE	2	100204
26	PACKING ASSEMBLY 3-1/2	3	102459
27	SUCTION MANIFOLD, 4” VICTAULIC	1	100175
28	O-RING, SUCTION MANIFOLD	3	100203
29	CAP SCREWS, 3/4 - 10 x 2 B7	12	103296
30	VALVE COMPLETE (Ref: 100200)	6	101778
31	SEAT	6	100199
32	INSERT VALVE	0	101868
33	ADAPTOR – STUFFING BOX.....	3	102446
34	ADAPTOR – FLUID END	3	102443
REFERENCE:			
	VALVE COVER TOOL.....	1	100160
	PACKING NUT TOOL.....	1	102485
	PLUNGER TOOL.....	1	102483
OPTIONAL EQUIPMENT			
	DISCHARGE FLANGE, 602-1002.....	0	101386
27	SUCTION MANIFOLD, 4” VICTAULIC WITH LIFTERS.....	0	PP1004700
	CYLINDER DRAIN.....	0	210AD01
27	MANIFOLD, SUCTION 5” VICTAULIC	0	104125
27	MANIFOLD, SUCTION 5” VICTAULIC WITH LIFTERS.....	0	PP1004701
27	MANIFOLD, SUCTION 6” VICTAULIC	0	PP1004703
27	MANIFOLD, SUCTION 6” VICTAULIC WITH LIFTERS.....	0	PP1004702
27	C02 MANIFOLD, SUCTION W/4” FIG. 206-CENTER.....	0	102496
27	C02 MANIFOLD, SUCTION, 4” LESS CONNECTIONS	0	102495

PACKING ASSEMBLY – 3-1/2” COMPACT



Ref. No.	Name of Part	Qty.	Part No.
1	LANTERN RING.....	1	102463
2	V-RING "SS".....	1	100297
3	V-RING "S".....	1	100972
4	HEADER RING.....	1	100298
5	ADAPTOR.....	1	102466
6	O-RING.....	1	101519
7	BACK-UP.....	1	102455
8	BACK-UP.....	1	102450
9	O-RING.....	1	102449

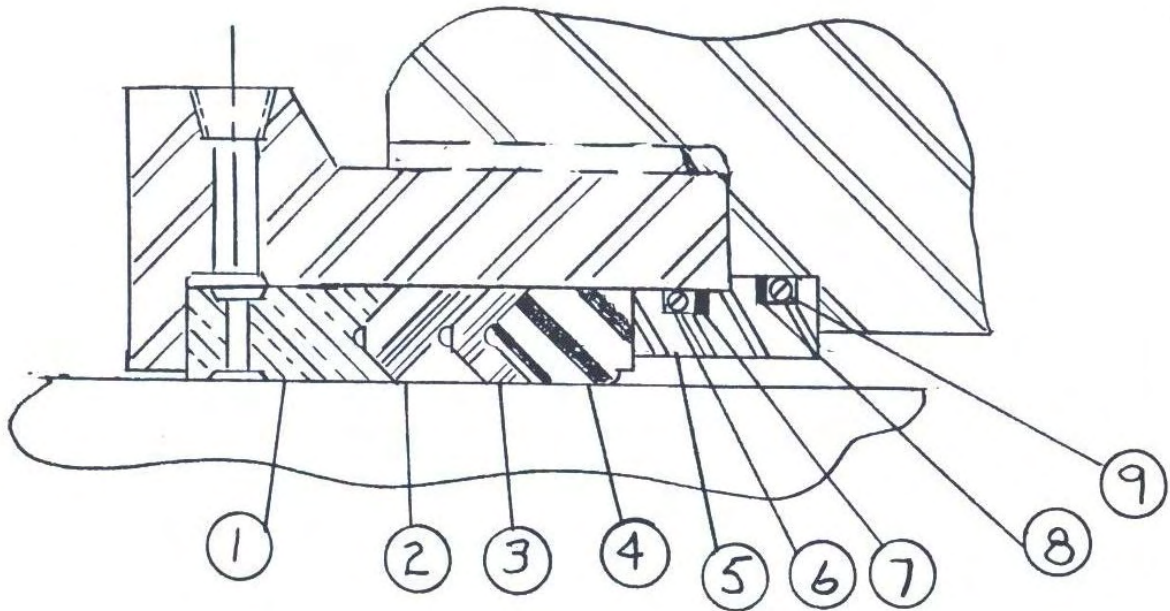
FLUID END ASSEMBLY – 4" COMPACT



FLUID END ASSEMBLY – 4” COMPACT

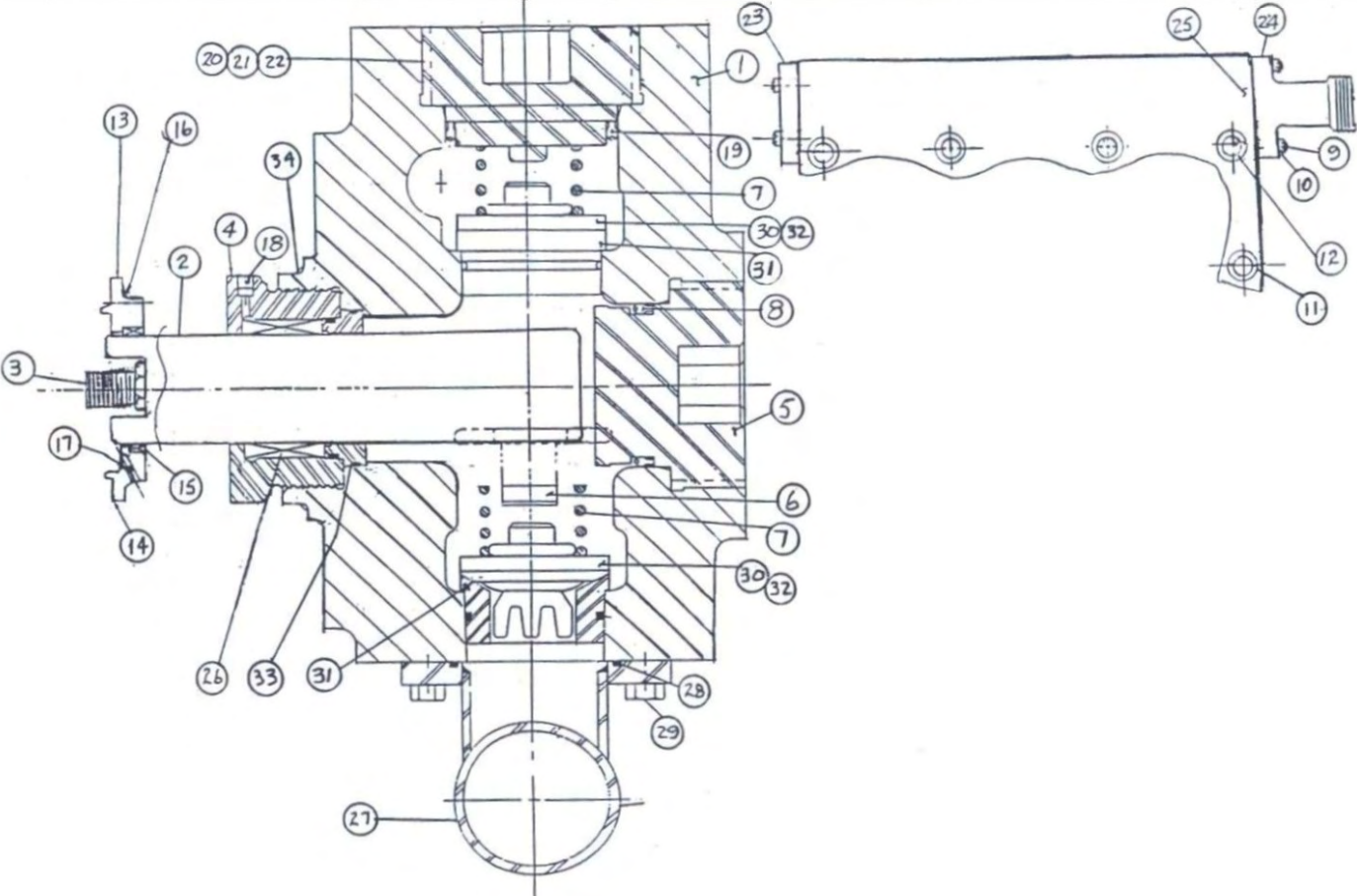
Ref. No.	Name of Part	Qty.	Part No.
1	FLUID CYLINDER 3-1/2” – 4-1/2”	1	102441
2	PLUNGER 4”	3	102412
3	PLUNGER STUD.....	3	100113
4	PACKING NUT 4”	3	102417
5	SUCTION COVER.....	3	102401
6	VALVE STOP, SUCTION	3	100176
7	VALVE SPRING.....	6	100198
8	SUCTION COVER SEAL.....	3	100197
9	1” – 8NC x 3-1/2 STUD.....	8	103334
10	1” – 8NC HH NUT.....	8	103351
11	1” – 12NC TPFS x 11” SCREW (500 Ft. Lbs)	4	102498
12	1-3/8 – 12NC TPFS x 10-1/2 (1300 Ft. Lbs).....	4	102499
13	DIAPHRAGM PLATE.....	3	102405
14	DIAPHRAGM GASKET.....	3	102500
15	DIAPHRAGM OIL SEAL 4 x 4-3/4.....	6	102504
16	DIAPHRAGM SCREW 3/8 x 16 x 5/8 HHCS.....	12	103259
17	SET SCREW 5/16 – 18NC	6	103431
18	PLUG, PIPE 1/4 NPT (Ref.).....	0	103364
19	DISCHARGE COVER SEAL	3	102466
20	DISCHARGE COVER.....	2	102400
21	GAGE CONNECTION & DISCHARGE COVER	1	102467
22	RETAINER NUT, GAGE CONNECTION.....	1	102468
23	BLANK DISCHARGE FLANGE	1	100180
24	DISCHARGE FLANGE, 2” – 1502.....	1	100182
25	SEAL, DISCHARGE FLANGE	2	100204
26	PACKING ASSEMBLY	3	102458
27	SUCTION MANIFOLD, 4” VICTAULIC	1	100175
28	O-RING, SUCTION MANIFOLD	3	100203
29	CAP SCREWS, 3/4 - 10 x 2 B7	12	103296
30	VALVE COMPLETE (Ref: 100200)	6	101778
31	SEAT.....	6	100199
32	INSERT VALVE	0	101868
33	ADAPTOR – STUFFING BOX.....	3	102445
34	ADAPTOR – FLUID END	3	102443
REFERENCE:			
	VALVE COVER TOOL.....		100160
	PACKING NUT TOOL.....		102485
	PLUNGER TOOL.....		102483
OPTIONAL EQUIPMENT			
	DISCHARGE FLANGE, 602-1002.....	0	101386
27	SUCTION MANIFOLD, 4” VICTAULIC WITH LIFTERS.....	0	PP1004700
	CYLINDER DRAIN.....	0	210AD01
27	MANIFOLD, SUCTION 5” VICTAULIC	0	104125
27	MANIFOLD, SUCTION 5” VICTAULIC WITH LIFTERS.....	0	PP1004701
27	C02 MANIFOLD, SUCTION W/4” FIG. 206-CENTER.....	0	102496
27	C02 MANIFOLD, SUCTION, 4” BLANK Less Connections....	0	102495

PACKING ASSEMBLY – 4" COMPACT



Ref. No.	Name of Part	Qty.	Part No.
1	LANTERN RING	1	102462
2	V-RING "SS"	1	100343
3	V-RING "S"	1	101340
4	HEADER RING	1	100342
5	ADAPTOR	1	102445
6	O-RING.	1	101160
7	BACK-UP	1	102456
8	BACK-UP	1	102450
9	O-RING	1	102449

FLUID END ASSEMBLY – 4-1/2" COMPACT



FLUID ASSEMBLY – 4-1/2” COMPACT

Ref. No.	Name of Part	Qty.	Part No.
1	FLUID CYLINDER 3-1/2” – 4-1/2”	1	102441
2	PLUNGER 4-1/2”	3	102411
3	PLUNGER STUD.....	3	100113
4	PACKING NUT 4-1/2”	3	102416
5	SUCTION COVER.....	3	102401
6	VALVE STOP, SUCTION	3	100176
7	VALVE SPRING	6	100198
8	SUCTION COVER SEAL.....	3	100197
9	1” – 8NC x 3-1/2 STUD.....	8	103334
10	1” – 8NC HH NUT	8	103351
11	1” – 12NC TPFS x 11” SCREW (500 Ft. Lbs)	4	102498
12	1-3/8 – 12NC TPFS x 10-1/2 (1300 Ft. Lbs).....	4	102499
13	DIAPHRAGM PLATE.....	3	102404
14	DIAPHRAGM GASKET	3	102500
15	DIAPHRAGM OIL SEAL 4-1/2 x 5-1/2.....	6	102505
16	DIAPHRAGM SCREW 3/8 x 16 x 5/8 HHCS.....	12	103259
17	SET SCREW 5/16 – 18NC	6	103431
18	PLUG, PIPE 1/4 NPT (Ref.).....	0	103364
19	DISCHARGE COVER SEAL	3	102466
20	DISCHARGE COVER.....	2	102400
21	GAGE CONNECTION & DISCHARGE COVER	1	102467
22	RETAINER NUT, GAGE CONNECTION	1	102468
23	BLANK DISCHARGE FLANGE	1	100180
24	DISCHARGE FLANGE, 2” – 1502.....	1	100182
25	SEAL, DISCHARGE FLANGE.....	2	100204
26	PACKING ASSEMBLY	3	102457
27	SUCTION MANIFOLD, 4” VICTAULIC.....	1	100175
28	O-RING, SUCTION MANIFOLD.....	3	100203
29	CAP SCREWS, 3/4 - 10 x 2 B7	12	103296
30	VALVE COMPLETE (Ref: 100200)	6	101778
31	SEAT.....	6	100199
32	INSERT VALVE	0	101868
33	ADAPTOR – STUFFING BOX.....	3	102444
34	ADAPTOR – FLUID END	3	102443

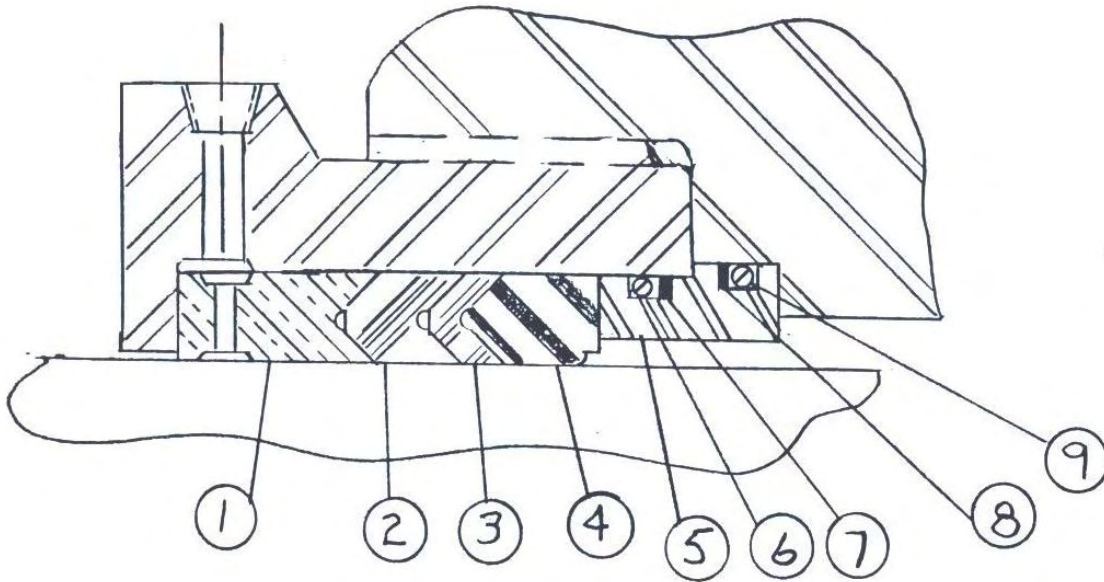
REFERENCE:

VALVE COVER TOOL.....	100160
PACKING NUT TOOL	102485

OPTIONAL EQUIPMENT

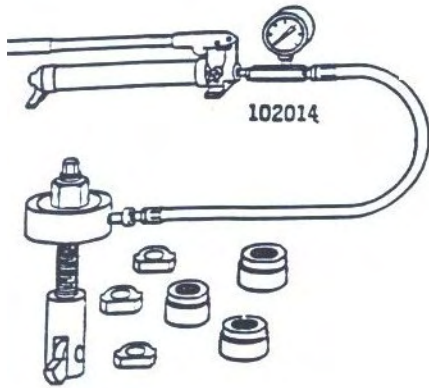
DISCHARGE FLANGE, 602-1002.....	0	101386
27 SUCTION MANIFOLD, 4” VICTAULIC WITH LIFTERS.....	0	PP1004700
CYLINDER DRAIN	0	210AD01
27 MANIFOLD, SUCTION 5” VICTAULIC.....	0	104125
27 MANIFOLD, SUCTION 5” VICTAULIC WITH LIFTERS.....	0	PP1004701
27 C02 MANIFOLD, SUCTION W/4” FIG. 206-CENTER	0	102496
27 C02 MANIFOLD, SUCTION, 4” BLANK Less Connections ...	0	102495

PACKING ASSEMBLY – 4-1/2” COMPACT

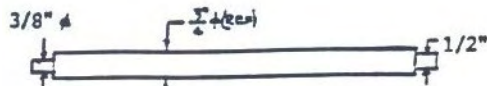


Ref. No.	Name of Part	Qty.	Part No.
1	LANTERN RING	1	102461
2	V-RING "SS"	1	100652
3	V-RING "S"	1	100971
4	HEADER RING.....	1	100195
5	ADAPTOR	1	102444
6	O-RING	1	102453
7	BACK-UP	1	102454
8	BACK-UP	1	102450
9	O-RING.....	1	102449

PUMP SERVICE TOOLS (See Fluid End Parts Lists)



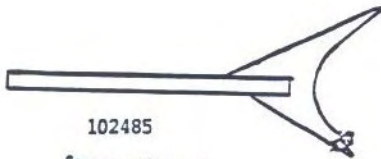
Valve Seat
Removal Tool



Stuffing Box Tool 101720



100162 Packing Nut Tool



102485
Spanner Wrench
Packing Nut Tool

Packing Removal Tool



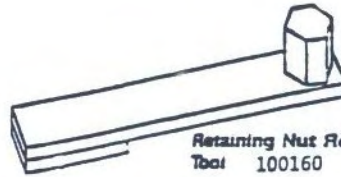
4"	101966
3"	102734
2.75	102734
2.50	102745
2.25	101934
2"	101728

103699 (36" Long)

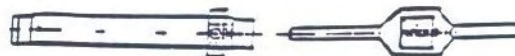


Valve Cover Removal Tool 100161 (24" Long)

Wrist Pin Removal tool-103217 - RR-1000
Wrist Pin Removal Tool-102118 - RR-500



Retaining Nut Removal
Tool 100160



Plunger
Removal Tool

1-1/4" Square - 102965
1-1/2" Square - 102483
2" Square - 116478W